

TRANSPORT 2045 METROPOLITAN TRANSPORTATION PLAN



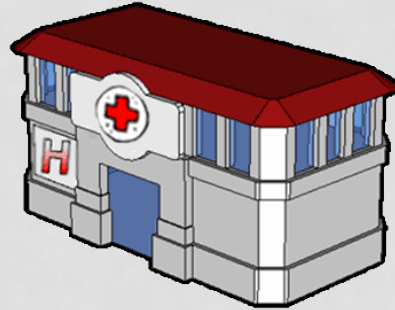
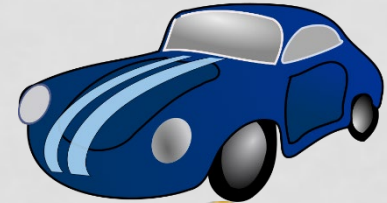
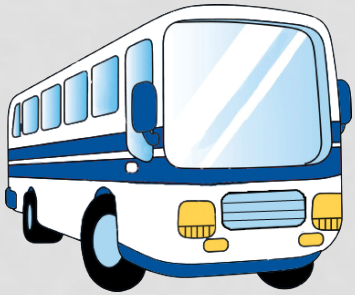
**MESILLA VALLEY METROPOLITAN
PLANNING ORGANIZATION**



November 8,
2018

BASIC ELEMENT OF TRANSPORTATION IS MOVEMENT

The transportation networks (streets, roads, public transit, bike lanes, trails, sidewalks) serve the residents of the Las Cruces area to go to and from their origins (i.e., home) and destinations (i.e., work, shopping, school, medical) using automobiles, trucks, public transportation, walking, or bicycles.



MPO Goals

- Find solutions for transportation challenges and anticipating future issues by:
 - Coordinating planning efforts on a regional basis including roads/streets, transit, walking and biking facilities in cooperation with land use development
 - Implementing multi-modal networks and design that provide safety for all modes
 - Constructing quality, convenient and connected transportation networks



Metropolitan Transportation Plan (MTP)

- Federal Government requires that Metropolitan Transportation Plans be updated every five years.
- Evaluates existing conditions and provides forecasts for the planning periods
- Contains both long-range and short-range strategies and actions
- Addresses all modes to achieve a balanced transportation system
- 20-year planning horizon with divisions for 5, 10 and 15 year period
- No projects which are proposed with Federal Highway Administration or Federal Transit Administration monies will be approved without being in the MTP



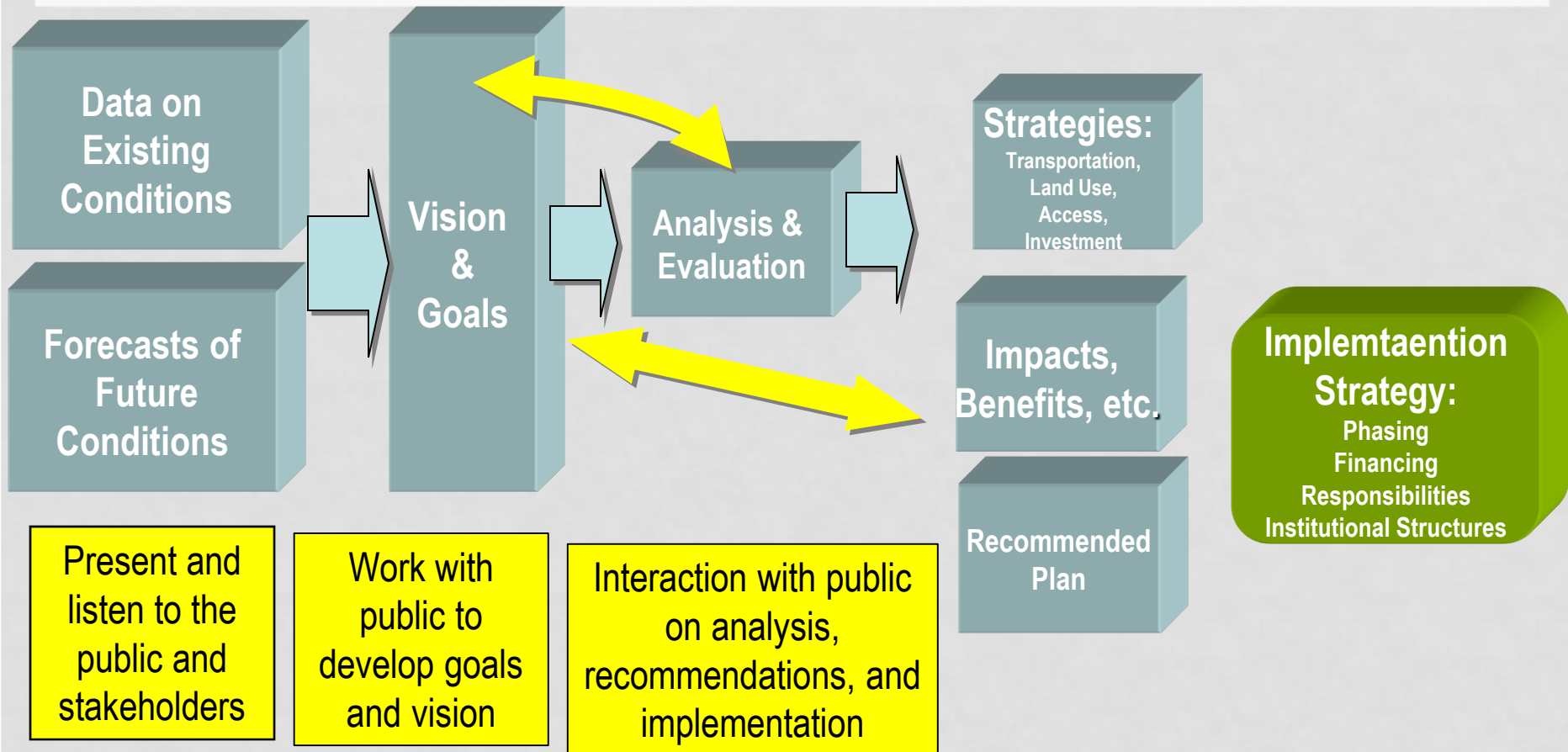
Potential MTP Items

- Performance Standards and Targets for:
 - Crashes (including bicycle and pedestrian crashes)
 - Congestion
 - Freight Movement
- Review of the Functional Classification Network
- Long Range Regional Transit Plan
- Improved regional East-West connectivity
- Improved integration of the trail network in the MPO area
- Inclusion of findings from travel demand model (traffic forecasting)
- Las Cruces and El Paso Commuter Rail
- Impact of Automated Vehicles

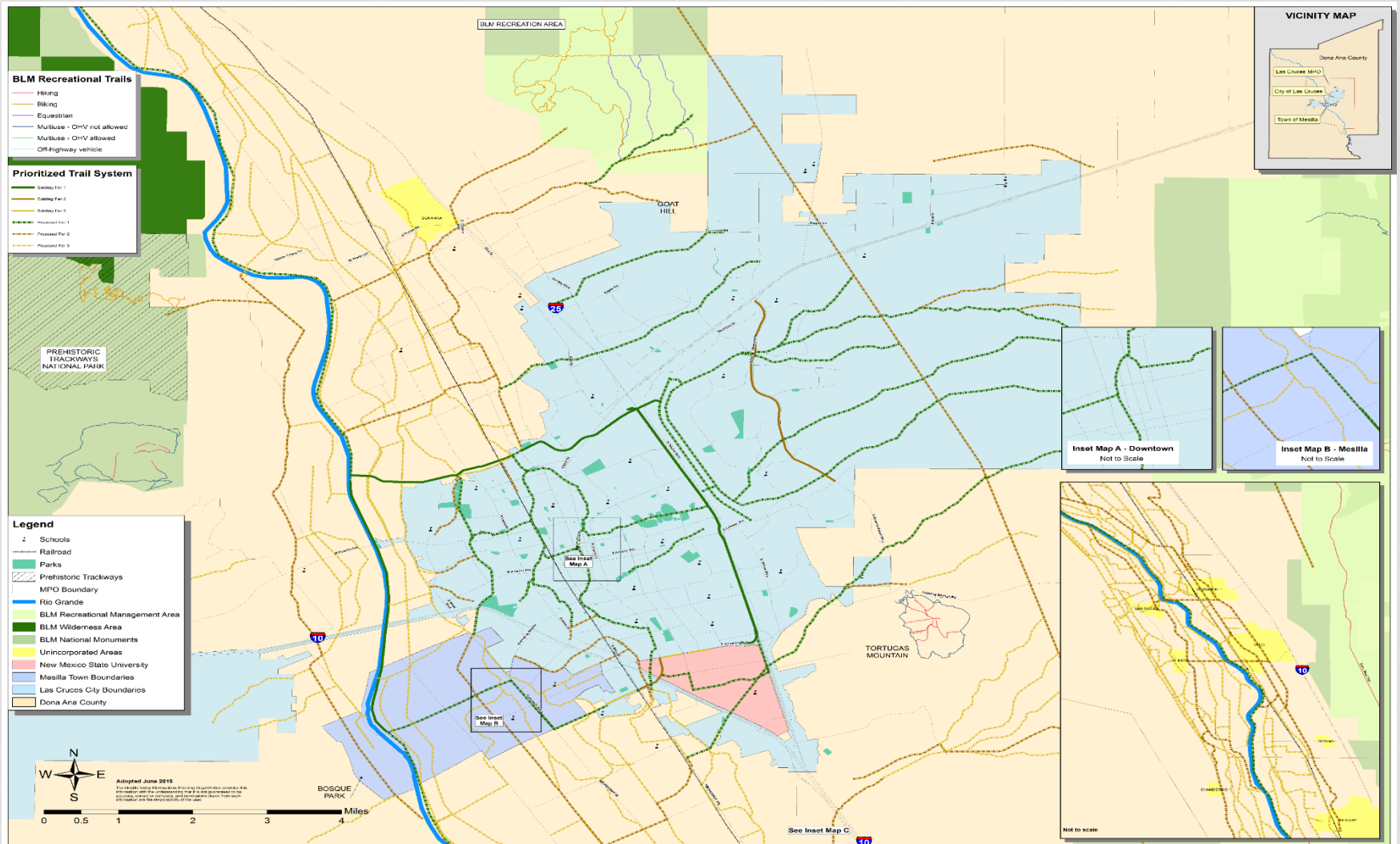


Metropolitan Transportation Plan (MTP) Process

(yellow boxes represent public participation)



Transport 2040 Trails Priority Plan



First Phase Open Houses for MTP Update

- November 29, 2018, 4:30 PM to 7:30 PM at the **Bank of the West**
- December 3, 2018, 4:30 PM to 7:30 PM at the **Sage Café**
- December 10, 2018, 4:30 PM to 7:30 PM at the **Radium Springs Community Center**
- December 13, 2018, 4:30 PM to 7:30 PM at the **Vado/Del Cerro Community Center**



Conclusion

- All residents of the MPO area are welcome to come to MPO Committees meetings (Policy Committee, Technical Advisory Committee, Bicycle and Pedestrian Facilities Advisory Committee)
- We are available for questions or comments in person or by e-mail.
- The MPO website at: <http://mesillavalleympo.org> has our contact information and you can also get on our mailing list.

